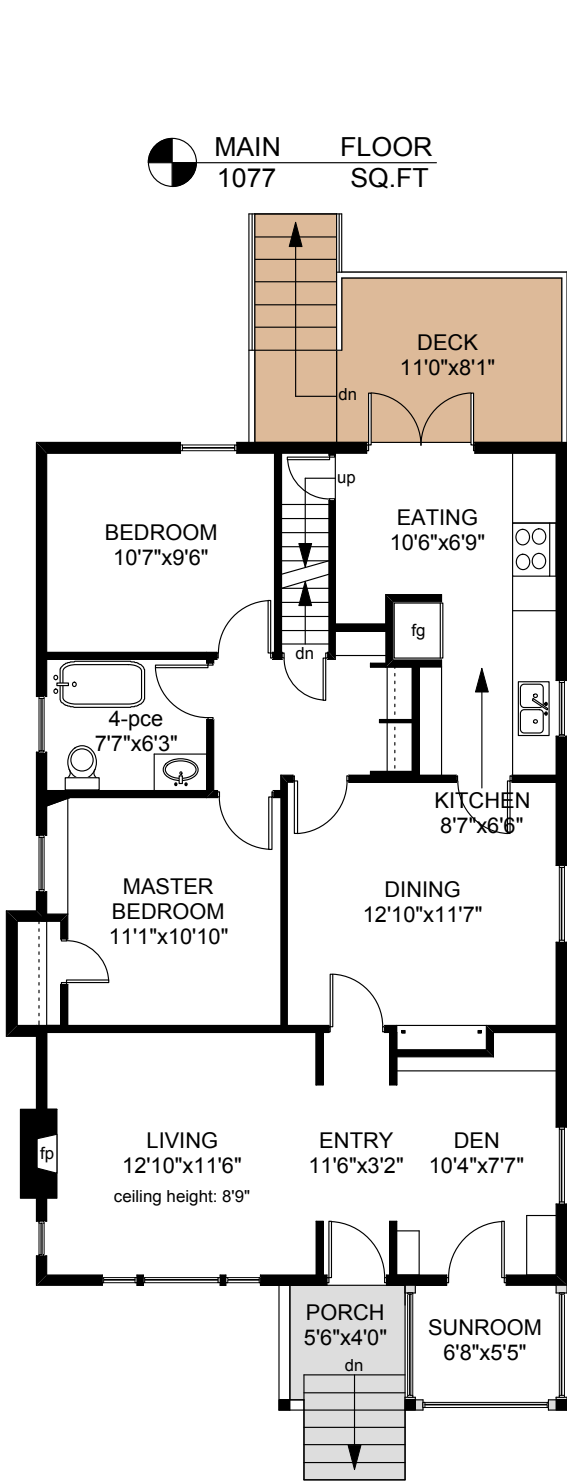
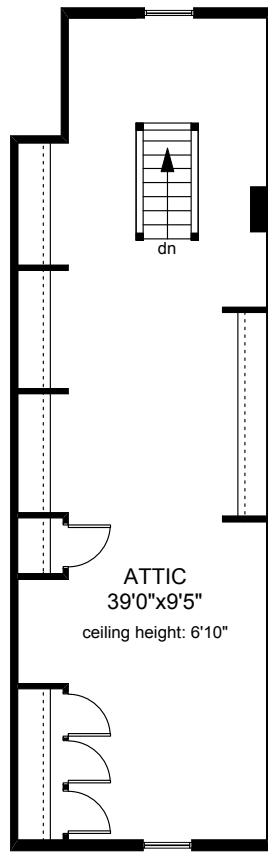


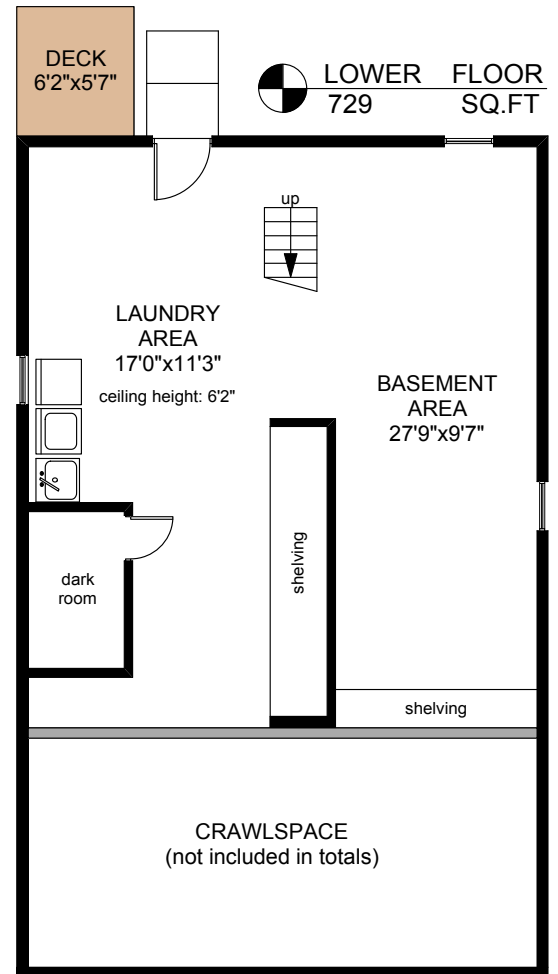
519 CORNWALL STREET



MAIN FLOOR
1077 SQ.FT

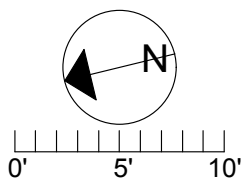


UPPER FLOOR
490 SQ.FT



LOWER FLOOR
729 SQ.FT

	FINISHED SQ. FT.	UNFINISHED SQ. FT.	TOTAL SQ. FT.
MAIN	1077	0	1077
UPPER	490	0	490
LOWER	0	729	729
TOTAL	1567	729	2296
DECKS	0	160	160
PORCH	0	24	24



PREPARED FOR THE EXCLUSIVE USE OF
PHILIP ILLINGWORTH OF DFH REAL ESTATE

MEASURED ON: 10/12/11
DRAWING FILE: 09782

Taf Measure VICTORIA, B.C.
Ph. 883.8894
www.tafemeasure.com