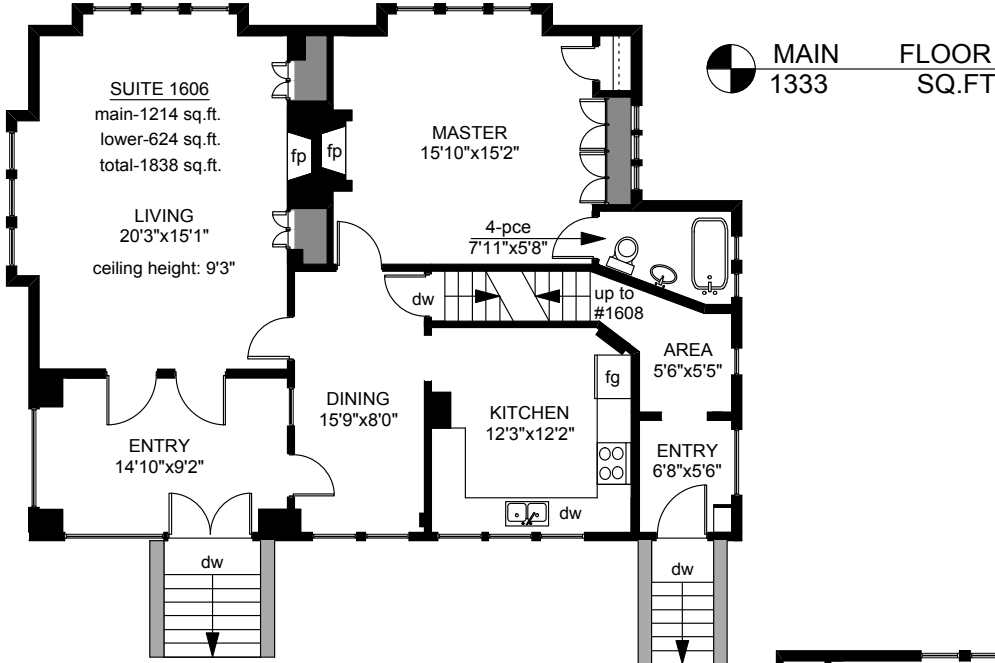
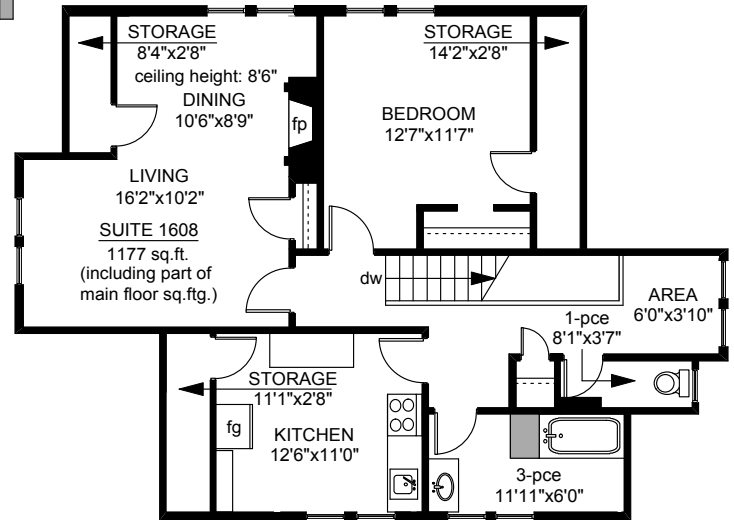


# 1606 - 1608 BELMONT AVENUE

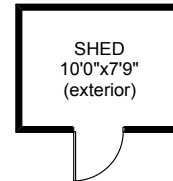
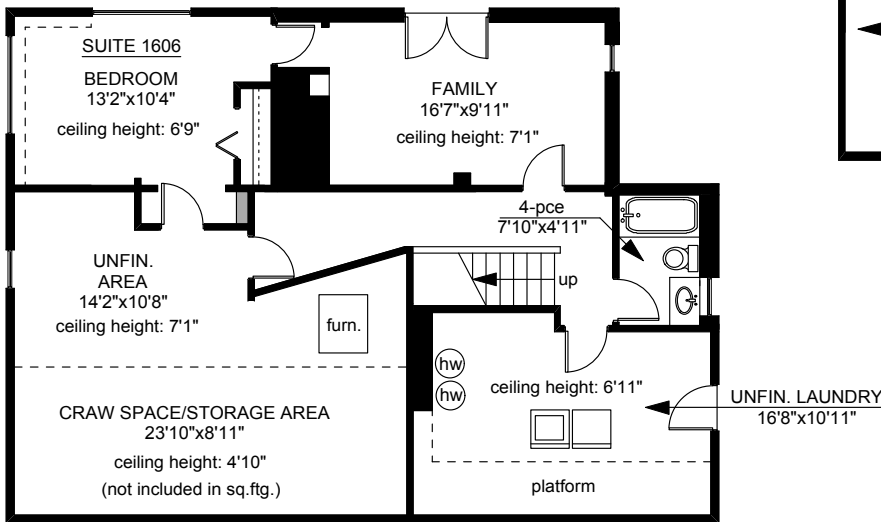


**MAIN FLOOR**  
1333 SQ.FT

**UPPER FLOOR**  
1058 SQ.FT

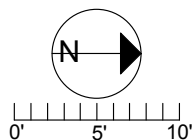


**LOWER FLOOR**  
1060 SQ.FT



**SHED**  
79 SQ.FT

|       | FINISHED<br>SQ. FT. | UNFINISHED<br>SQ. FT. | TOTAL<br>SQ. FT. |
|-------|---------------------|-----------------------|------------------|
| MAIN  | 1333                | 0                     | 1333             |
| UPPER | 1058                | 0                     | 1058             |
| LOWER | 624                 | 436                   | 1060             |
| TOTAL | 3015                | 436                   | 3451             |
| SHED  | 0                   | 79                    | 79               |



PREPARED FOR THE EXCLUSIVE USE OF  
PHILIP ILLINGWORTH & FRANK CHAN  
OF DFH REAL ESTATE

MEASURED ON: 09/08/11  
DRAWING FILE: 09689

**Tafe Measure** VICTORIA, B.C.  
Ph. 883.8894  
www.tafemeasure.com