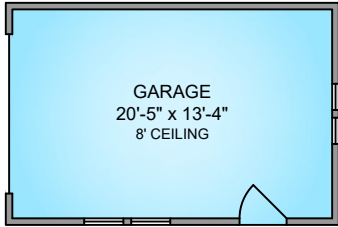
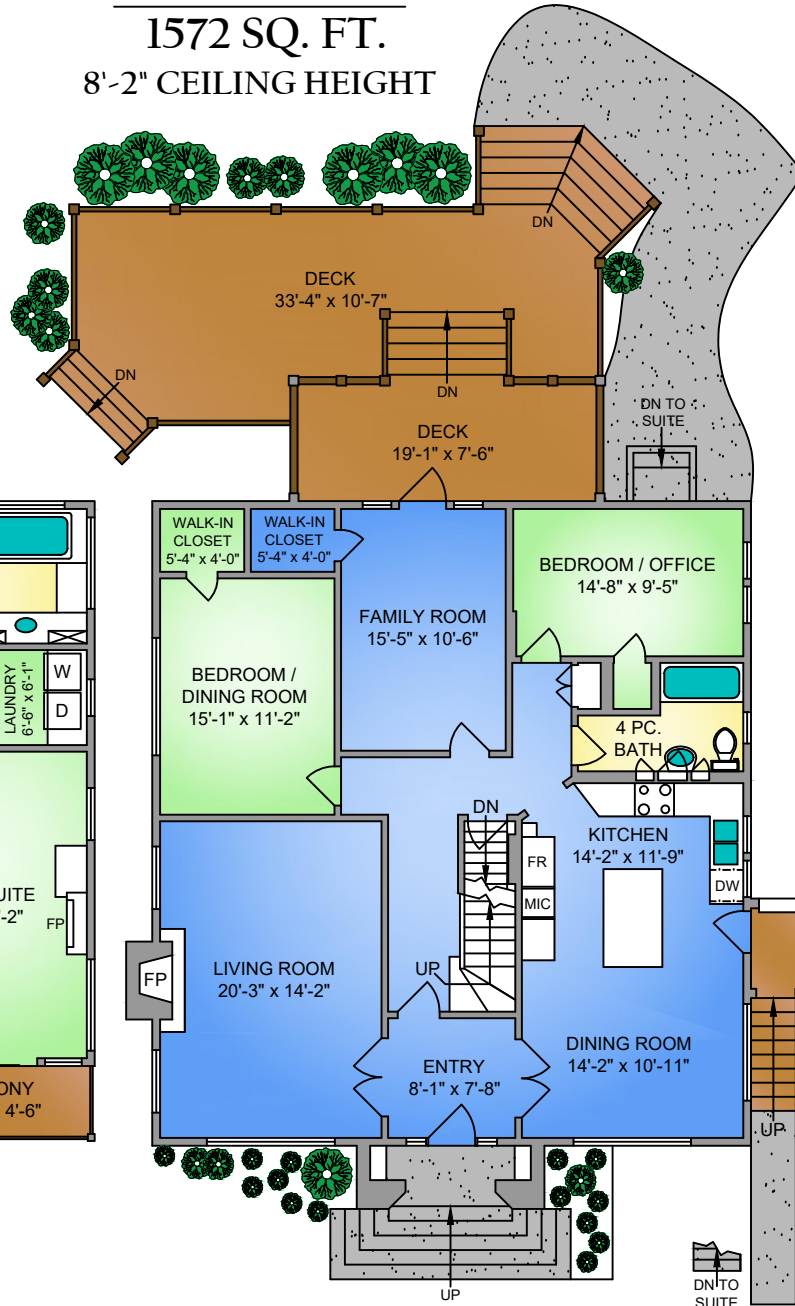


GARAGE
301 SQ. FT.



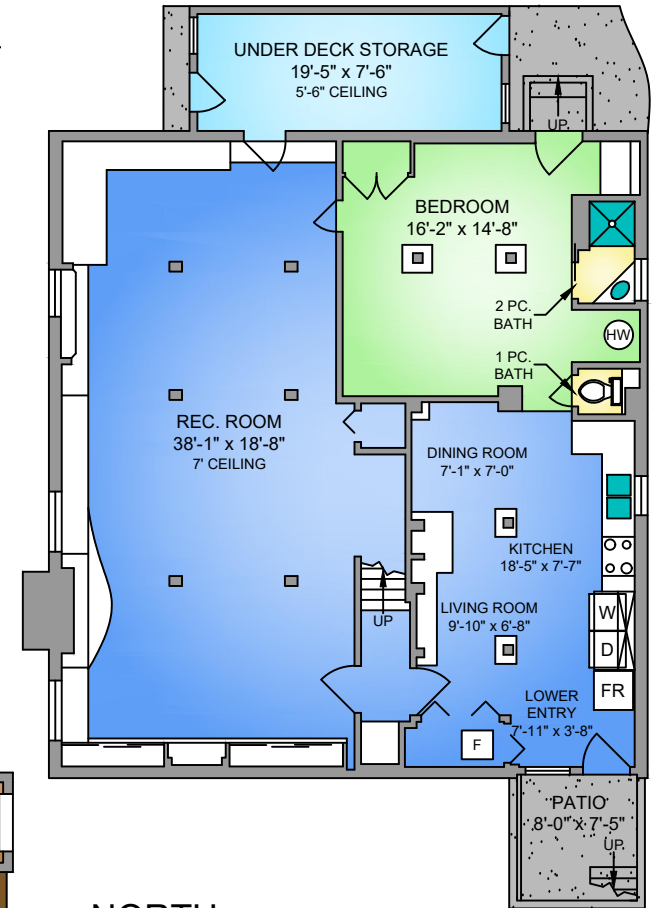
MAIN FLOOR
1572 SQ. FT.

8'-2" CEILING HEIGHT



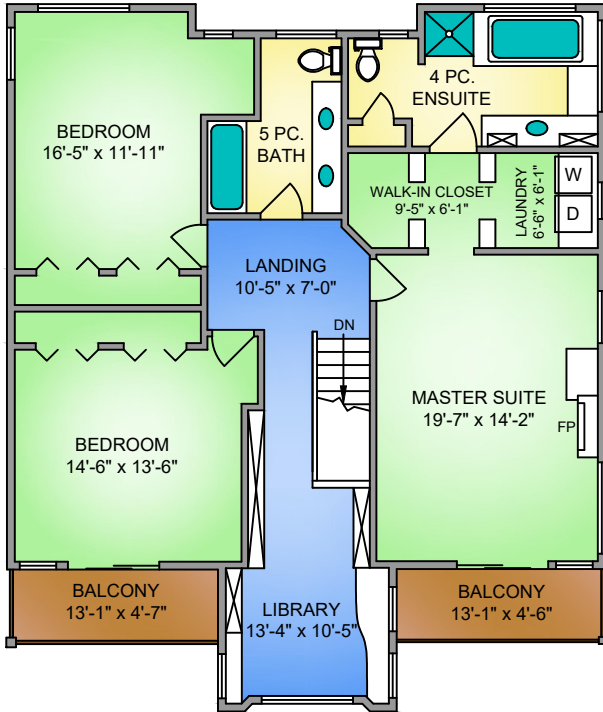
LOWER FLOOR
1572 SQ. FT.

7' CEILING HEIGHT

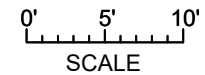


UPPER FLOOR
1455 SQ. FT.

8' CEILING HEIGHT



NORTH



2810 SOMASS DRIVE OCTOBER 18, 2018			
PREPARED FOR THE EXCLUSIVE USE OF PHILIP ILLINGWORTH PLANS MAY NOT BE 100% ACCURATE, IF CRITICAL BUYER TO VERIFY.			
FLOOR	AREA (SQ. FT.)		
	FINISHED	GARAGE	DECK / PATIO
MAIN	1572	301	491
UPPER	1455	-	118
LOWER	1572	-	60
TOTAL	4599	301	669



250-884-9753
matt@propermeasure.com
www.propermeasure.com